



College Close, Loughton, IG10

BUTLER  STAG





**Guide Price £275,000-  
£300,000**

**Situated in a sought-after modern development, this one-bedroom first-floor apartment offers contemporary living in a desirable location.**



## Leasehold

- Sold by Butler and Stag
- Open Plan Lounge/Kitchen/Dining Area
- Allocated Parking
- One Bedroom First Floor Apartment
- Well Presented Throughout
- Short Walk of Debden Central Line Station and Broadway
- 184 Year Lease

The property features a dual-aspect lounge that is bathed in natural light and seamlessly connects to an open-plan kitchen, complete with space for a dining table and chairs. The double bedroom includes a fitted wardrobe, and the stylish bathroom enhances the apartment's modern appeal. Additional highlights include an allocated parking space and a lengthy 184-year lease.

Located in a quiet cul-de-sac, the apartment is within a short walking distance of Debden Central Line station, making it ideal for commuters. For convenience.

The Broadway is nearby, offering a range of amenities including a Sainsbury's, Iceland, a traditional butcher, and a gym, perfect for picking up last-minute essentials.









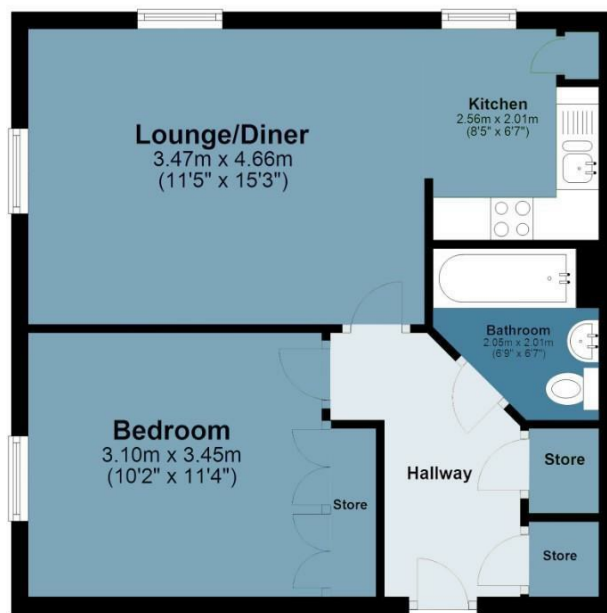
## College Close

Approx. Gross Internal Area 45 Sq M ( 484.2 Sq Ft )

BUTLER & STAG

### First Floor

Approx. 45.0 sq. metres (484.2 sq. feet)



Measurements are approximate and for illustration purposes only. While we do not doubt the accuracy and completeness, we advise you conduct a careful independent assessment of the property to determine monetary value.  
© @modephoto.uk www.modephoto.co.uk

IMPORTANT NOTICE - These particulars have been prepared in good faith and they are not intended to constitute part of an offer or contract. We have not performed a structural survey on this property and the services, appliances and specific fittings have not been tested. All photographs, measurements, floor plans and distances referred to are given as a guide and should not be relied upon.

BUTLER & STAG

☎ 01992 667666

🏠 4 Forest Drive, Theydon Bois, Essex, CM16 7EY

✉ theydon@butlerandstag.com

[www.butlerandstag.uk](http://www.butlerandstag.uk)